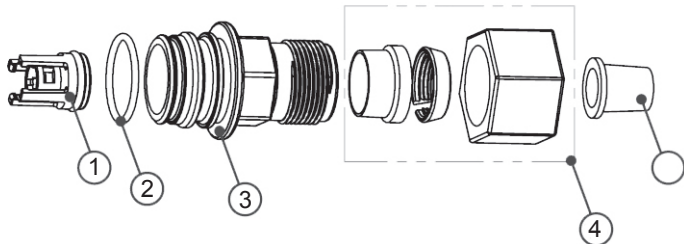


Order No. V3434-01
Description: WS1.5 Refill Asy. 5/8 x 3/4

Drawing No.	Order No.	Description	Quantity
1	V3428*	WS1.5 Refill Retainer ASY	1
2	V3163	O-ring 019	1
3	V3434	WS1.5 Refill Adapter 5/8"	1
4	JCP-PG-10BLK	Nut Compression 5/8" Black	1
5	PKP10TS8-BULK	Polytube Insert 5/8"	1

*V3428 contains a V3182 WS1 RFC

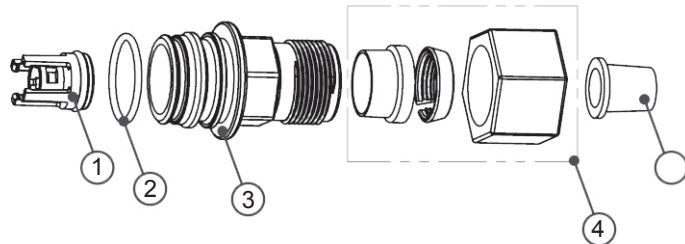


Form No. V3115-21 • 7/16/2020

Order No. V3434-01
Description: WS1.5 Refill Asy. 5/8 x 3/4

Drawing No.	Order No.	Description	Quantity
1	V3428*	WS1.5 Refill Retainer ASY	1
2	V3163	O-ring 019	1
3	V3434	WS1.5 Refill Adapter 5/8"	1
4	JCP-PG-10BLK	Nut Compression 5/8" Black	1
5	PKP10TS8-BULK	Polytube Insert 5/8"	1

*V3428 contains a V3182 WS1 RFC

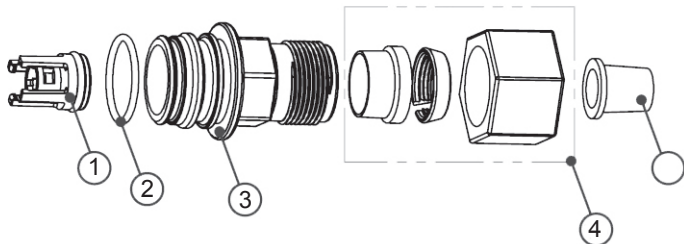


Form No. V3115-21 • 7/16/2020

Order No. V3434-01
Description: WS1.5 Refill Asy. 5/8 x 3/4

Drawing No.	Order No.	Description	Quantity
1	V3428*	WS1.5 Refill Retainer ASY	1
2	V3163	O-ring 019	1
3	V3434	WS1.5 Refill Adapter 5/8"	1
4	JCP-PG-10BLK	Nut Compression 5/8" Black	1
5	PKP10TS8-BULK	Polytube Insert 5/8"	1

*V3428 contains a V3182 WS1 RFC

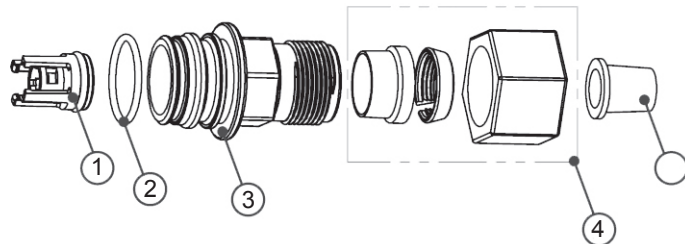


Form No. V3115-21 • 7/16/2020

Order No. V3434-01
Description: WS1.5 Refill Asy. 5/8 x 3/4

Drawing No.	Order No.	Description	Quantity
1	V3428*	WS1.5 Refill Retainer ASY	1
2	V3163	O-ring 019	1
3	V3434	WS1.5 Refill Adapter 5/8"	1
4	JCP-PG-10BLK	Nut Compression 5/8" Black	1
5	PKP10TS8-BULK	Polytube Insert 5/8"	1

*V3428 contains a V3182 WS1 RFC



Form No. V3115-21 • 7/16/2020

Order No. V3434-01
Description: WS1.5 Refill Asy. 5/8 x 3/4

HYDROCARBONS SUCH AS VASELINE®, PETROLEUM JELLY, KEROSENE, BENZENE, GASOLINE, ETC., WILL DAMAGE PRODUCTS THAT CONTAIN O-RINGS OR PLASTIC COMPONENTS. EXPOSURE TO SUCH HYDROCARBONS MAY CAUSE THE PRODUCTS TO LEAK. DO NOT USE CLACK CONTROL VALVE PRODUCT(S) ON WATER SUPPLIES THAT CONTAIN HYDROCARBONS SUCH AS KEROSENE, BENZENE, GASOLINE, ETC.

Installation Instructions

1. Pull H4615 Locking Clip.
2. Remove 1/2" Brine Elbow.
3. Insert 5/8" Brine Fitting.
4. Reinsert Locking Clip.
5. Slip Nut on to 5/8" Polytube.
6. Install 5/8" Polytube Insert into 5/8" Brine Line.
7. Insert 5/8" Tube into 5/8" Fitting.
8. Tighten Nut.

Form No. V3115-21 • 7/16/2020

Order No. V3434-01
Description: WS1.5 Refill Asy. 5/8 x 3/4

HYDROCARBONS SUCH AS VASELINE®, PETROLEUM JELLY, KEROSENE, BENZENE, GASOLINE, ETC., WILL DAMAGE PRODUCTS THAT CONTAIN O-RINGS OR PLASTIC COMPONENTS. EXPOSURE TO SUCH HYDROCARBONS MAY CAUSE THE PRODUCTS TO LEAK. DO NOT USE CLACK CONTROL VALVE PRODUCT(S) ON WATER SUPPLIES THAT CONTAIN HYDROCARBONS SUCH AS KEROSENE, BENZENE, GASOLINE, ETC.

Installation Instructions

1. Pull H4615 Locking Clip.
2. Remove 1/2" Brine Elbow.
3. Insert 5/8" Brine Fitting.
4. Reinsert Locking Clip.
5. Slip Nut on to 5/8" Polytube.
6. Install 5/8" Polytube Insert into 5/8" Brine Line.
7. Insert 5/8" Tube into 5/8" Fitting.
8. Tighten Nut.

Form No. V3115-21 • 7/16/2020

Order No. V3434-01
Description: WS1.5 Refill Asy. 5/8 x 3/4

HYDROCARBONS SUCH AS VASELINE®, PETROLEUM JELLY, KEROSENE, BENZENE, GASOLINE, ETC., WILL DAMAGE PRODUCTS THAT CONTAIN O-RINGS OR PLASTIC COMPONENTS. EXPOSURE TO SUCH HYDROCARBONS MAY CAUSE THE PRODUCTS TO LEAK. DO NOT USE CLACK CONTROL VALVE PRODUCT(S) ON WATER SUPPLIES THAT CONTAIN HYDROCARBONS SUCH AS KEROSENE, BENZENE, GASOLINE, ETC.

Installation Instructions

1. Pull H4615 Locking Clip.
2. Remove 1/2" Brine Elbow.
3. Insert 5/8" Brine Fitting.
4. Reinsert Locking Clip.
5. Slip Nut on to 5/8" Polytube.
6. Install 5/8" Polytube Insert into 5/8" Brine Line.
7. Insert 5/8" Tube into 5/8" Fitting.
8. Tighten Nut.

Form No. V3115-21 • 7/16/2020

Order No. V3434-01
Description: WS1.5 Refill Asy. 5/8 x 3/4

HYDROCARBONS SUCH AS VASELINE®, PETROLEUM JELLY, KEROSENE, BENZENE, GASOLINE, ETC., WILL DAMAGE PRODUCTS THAT CONTAIN O-RINGS OR PLASTIC COMPONENTS. EXPOSURE TO SUCH HYDROCARBONS MAY CAUSE THE PRODUCTS TO LEAK. DO NOT USE CLACK CONTROL VALVE PRODUCT(S) ON WATER SUPPLIES THAT CONTAIN HYDROCARBONS SUCH AS KEROSENE, BENZENE, GASOLINE, ETC.

Installation Instructions

1. Pull H4615 Locking Clip.
2. Remove 1/2" Brine Elbow.
3. Insert 5/8" Brine Fitting.
4. Reinsert Locking Clip.
5. Slip Nut on to 5/8" Polytube.
6. Install 5/8" Polytube Insert into 5/8" Brine Line.
7. Insert 5/8" Tube into 5/8" Fitting.
8. Tighten Nut.

Form No. V3115-21 • 7/16/2020